

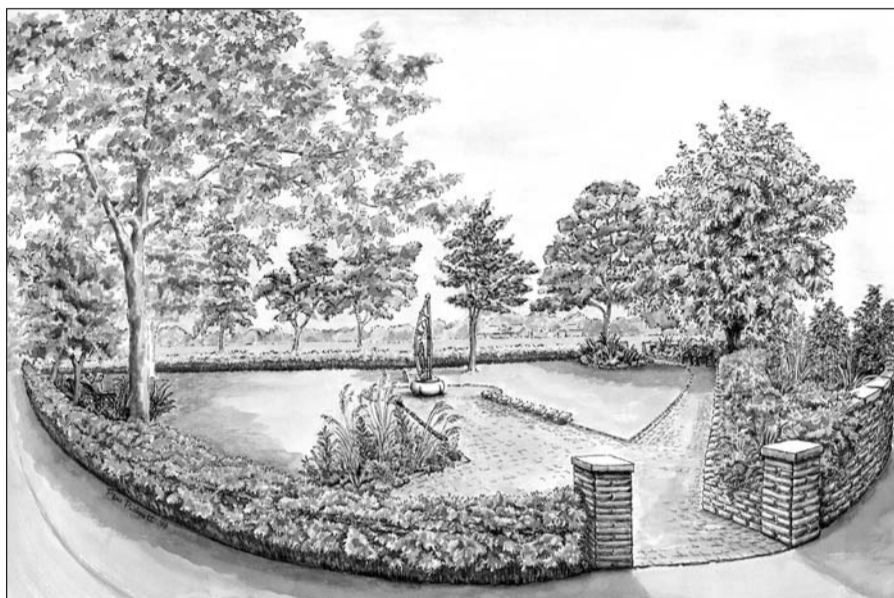
Memorial Garden works to begin

Some of you may well have been wondering when anything was ever going to happen in the Memorial Garden. Havant Borough Council have kick-started the works by levelling and resurfacing a section of path just outside the garden, near the Horse Chestnut tree. They have also put a barrier across what used to be the north-south path through the garden. The new path will be re-sited away from the roots of the tree.

Construction work on the garden is planned to start early in the New Year. This work includes clearance of the site, laying new paved areas and a path, building two entrance pillars, and installing two benches and a noticeboard. Unless we have unexpected costs which absorb our contingency sum, we hope to complete much of the soft landscaping preparation as well. The 'Awards for All' (Big Lottery) grant of £10,000 has made it possible for this work to be carried out.

Our priority after completing the hard and soft landscaping work, is planting the boundary hedges, with a Rose hedge (*Rosa rugosa*) on the south side and Beech hedges on the other sides. The 'Friends' already have work sessions in the garden as the need arises. Once the garden is established, we hope to have them on a regular basis.

Sarah Sanderson & Frances Jannaway



Artists impression of the Memorial Garden by Pam Picknett

The Sound of Silence

Silence echoed around Emsworth Recreation Ground at 11am on Remembrance Sunday - when the traditional two minute quiet reflection was observed for those who have given everything in the cause of peace and justice.



Those gathered around 'Absence' in the Memorial Garden represented a complete cross section of the Emsworth community. War veterans proudly wearing their medals, local Scouts and Beavers, local councillors, families and individual residents came together to pay their respects in the brisk, chilly, autumn wind.

The ceremony was conducted by the Rev. Tom Kennar with the silence being finally broken by the Last Post played by trumpeters Chris Miles and Michael Prowting of TS Unity.

Culmination was the laying of wreaths from the Chelsea Pensioners of the Royal Victoria Hospital, London and the Friends of Emsworth Memorial Garden and the planting of small poppy crosses by the Scouts.

A later addition was the surprise appearance of a wreath from the Boy Entrants of the RAF Supply Group.

On this occasion 11th November coincided with Remembrance Sunday but, regardless of the day of the week, there will always be a ceremony beside 'Absence' on the 11th hour of the 11th day of the 11th month.

Can anyone give us information regarding the whereabouts of the RAF Boy Entrants? We would, of course, like to establish contact.

Brian Picknett

Trees for the Future

A Chinese proverb says that the best time to plant a tree was 10 years ago and the next best time is now. But what type of trees should we plant as climate change becomes a reality? The Tree Council's SE Regional Forum held at Kew Gardens in October this year was called 'Trees and Climate Change'. According to Derek Patch of the Tree Advice Trust, we do not know the full extent of climate change or how it will affect trees in the future so we should look after our existing trees and plant for the current conditions.

We are very fortunate in Emsworth to have many beautiful trees most of which are in private gardens, along roads, in parks, woods and other open spaces. All these trees are an important part of the landscape, townscape

and street scene. Take for example the very beautiful London Plane tree in the front garden of a house on Havant Road opposite the junction with Record Road. This tree has recently been protected by a Tree Preservation Order (TPO) because of its amenity value. Trees in large gardens are constantly under threat from development, such as those in the gardens of 50 Bath Road, 26 New Brighton Road and 58 Horndean Road. Fortunately, the Tree Officer at HBC has put TPOs on several of the trees in these gardens. But putting a TPO on a tree does not necessarily protect the tree for the life of that tree. See Richard Galloway's article about the Hermitage development and TPO trees on page 8.

Continued on page 8

Eastern approaches boat project

For years, residents and visitors approaching Emsworth from West Sussex have complained about the rather uninspiring road junction at Hermitage Bridge. As a result of lengthy negotiations with West Sussex Highways and Chichester District Council (CDC), the EBA were given permission to landscape the small triangle at the bottom of Queen Street.

By the time you read this, work will have been completed and the result is a stunning boat and planting feature. The scheme was formally opened on the 16th December by the Leader of CDC Miles Cullen and Joy Okwuadigbo on behalf of HBC. This is another example of the EBA promoting Emsworth and adding an attractive feature to the public space. Local contractors, Windsor and Ward deserve great credit for their professionalism and cooperation with the EBA in completing this project.



We asked for ideas for the location for another "flowering boat" in the last edition of The EMS and received some good suggestions. This will be something we will consider in our programme for 2008.

Brendan Gibb-Gray, Chairman, EBA

A YEAR WITHOUT THE EMSWORTH FOOD FESTIVAL

The New Year is not just for personal reflection – it's also well timed for review and restructure. This could not be more true for the Emsworth Food Festival.

Early December, the directors decided to postpone the event until 2009, recognising that whilst it was the most successful year yet, it also had the greatest impact on people living and working within the town centre. Emsworth Food Festival effectively closed the town centre to 'normal' life for just over four days, whilst the cost of running such a large event continued to escalate.

So what will 2008 be like? There will be plenty of activity within the organising committee, as they have pledged to keep the heart of the festival going. Projects will continue in schools, the three Young Chefs competitions will take place and local charities and initiatives will benefit from the 2007 event. In addition, the organisers are looking to put together a comprehensive planning schedule including consultations with residents and businesses to look at how

the next Festival can serve best the community's interests.

The team will also be visiting other regional festivals to take a fresh look at what attracts visitors whilst seeing for themselves the challenges and solutions taken by other food events.

The Festival was originally set up to serve the businesses within Emsworth, and for many it will be a year to reflect on how the Festival works for them – particularly around September. Does the Festival generate income simply for the producers trading at the event or is it key in keeping Emsworth buzzing with a choice of food retailers and great restaurants and pubs – allowing people to discover something that Emsworth people have known for decades. Emsworth is a unique place, worthy of national attention and one that will continue to thrive amongst a world becoming dominated by supermarket giants – several only a few miles away in the foreseeable future.

Amanda Fallbrown

Cotton paratroopers descend on Emsworth!

Like many other towns up and down the country, the EBA has been taking the lead in reducing our dependency on plastic bags. We know this has the support of many residents and whilst it is difficult to totally eliminate plastic from packaging, we are determined to try. What makes the Emsworth initiative unique is that we are delivering a free reusable cotton bag to every household in Emsworth. However, this has been a considerable logistical exercise!

5000 cotton bags were ordered from a reputable and ethical source in India. Incidentally, arriving in Emsworth on the exact day and time given when the order was placed. The bags had to be individually folded and put into envelopes, then counted and split into distribution areas around the town.

Early in December, thirty people met in the Brookfield Hotel, many groups and organisations were represented and completed the first part of the work over mulled wine and sandwiches provided by the hotel.

More than forty people agreed to act as "cotton paratroopers" and delivered the bags to about 5000 homes all over Emsworth. By the time you read this, the operation should have been completed. However, if for any reason you have not received a bag, please let me know.

Children from Emsworth Primary School have supported us with surveys. Furthermore, under the supervision of teachers and parents they have delivered bags to residents in Selangor Avenue and Record Road. We appreciate the assistance of the Headmistress Rose Law and Caroline Fisk (parent/teacher) in making all this happen. Our thanks also to John Tweddell for his design work.

Brendan Gibb-Gray, Chairman, EBA

The new 12 page EMS

Contents

Letters & Editorial	2	Environment	8
ERA, EBA, ECB & Council News	3	Community News	9
Planning	4	Events Diary	10
Local News	5	Groups & Societies	11/12
Health Service Special	6/7	ERA Committee	12